



Falcons Reunite: Canadian Academy's Reopening Plan August 2020

Introduction

Canadian Academy is looking forward to welcoming our students back to campus in August. Moving forward, our priority will continue to be the health and well-being of our children, faculty and staff, and community.

While we work towards opening our campus, we know that we may need to move to our Distance Learning Program model, or an extended physical distancing/hybrid model that provides opportunities for both face-to-face as well as online interactions. We are preparing for the situation to be dynamic and possibly change during the school year several times. Our goal is to be able to respond to local and national conditions as quickly and seamlessly as possible in order to support the learning and health of our entire community.

The CA Leadership Team, in coordination with public health officials, government requirements, and resources from other schools, have created this brief summary to highlight the options for teaching and learning for the 2020-2021 school year.

Canadian Academy will continue to review our plans and will update our community in a timely manner. We remain committed to serving the health, well-being and learning of our students with a model that is engaging, flexible, and responsive to the current situation.

Guiding Principles

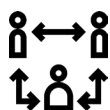
As a foundation for planning for the coming 2020-2021 school year, we will focus on five principles. We are committed to our:



Physical and Emotional Safety - providing students, parents, and staff with a physically and emotionally safe environment in which to learn and grow.



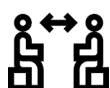
Teaching and Learning - nurturing a community of learners whether online, on campus, or through a hybrid model, the continuity of learning is always our priority.



Community - engaging our inclusive community and providing service to those around us.



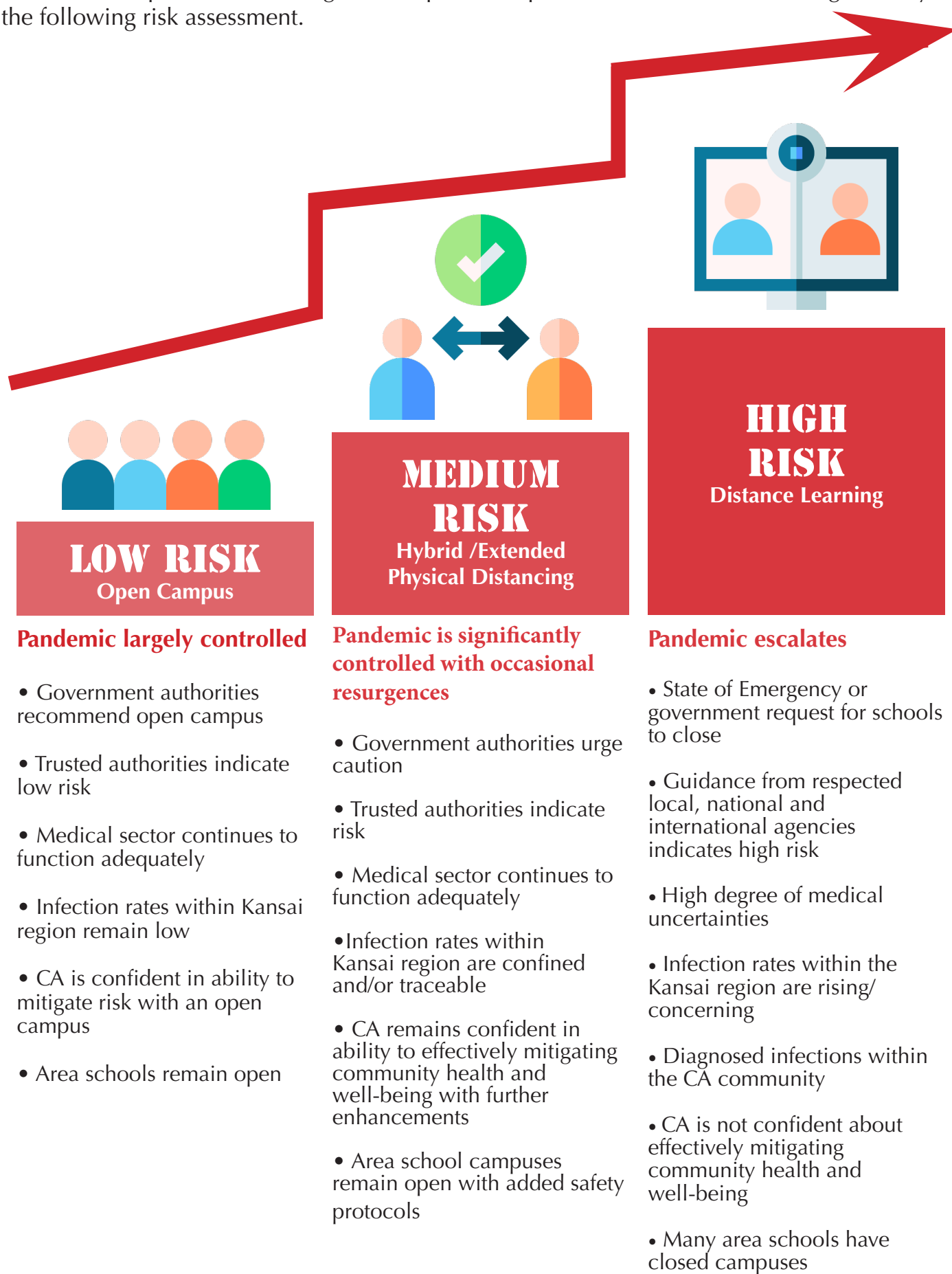
Connections - maintaining connections with our local and global community, virtually or in-person.



Communication - engaging in clear, timely and respectful communication.

Learning Models

CA has developed three learning model options. Implementation of each will be guided by the following risk assessment.



Elementary School Safety Implications

Open Campus

Low Risk: The public health situation in Kobe, Hyogo, and Japan continues to improve and community spread is contained and controlled.

The campus will be open with many new protocols ensuring necessary physical distancing and rigorous hygiene practice. Elementary School will follow the normal 9-day schedule with regular start and ending times. Teaching and learning will be resumed as close to normal as possible and aligned with the CA philosophy and practice, and programs.

- Rigorous hygiene protocols are followed
- All students and adults on campus are wearing masks whenever possible and safe
- Only parents of PreK/KA and KB students are allowed inside the building
- Classroom spaces are re-organized to allow physical distancing
- Student movement on campus may be limited
- Students will follow carefully designed measures for transitions including specialist classes, lunch and recesses to ensure physical distancing and high level of hygiene

Extended Physical Distancing

Medium Risk: The public health situation in Japan continues to be at risk. Community spread in the Hyogo region means that additional and immediate physical distancing in school is required.

The campus is open with extended physical distancing measures. Elementary School utilizes all additional learning spaces to decrease the number of students in each learning space and to ensure maximum physical distancing whilst learning still taking place on campus. School may focus on teaching and learning of limited areas in the curriculum to limit movement and to ensure safety of students and teachers.

School leadership decisions or government policies regarding distancing and group sizes may guide limitations to the number of students on campus at any one time.

- Rigorous hygiene protocols are followed
- Student numbers in each classroom are reduced
- Direct student-to-student or teacher-to-student interactions are limited
- No parents are allowed on campus
- Student movement on campus is minimized
- Some specialist classes like PE, Music, Visual Arts, or Japanese may be limited, paused, or will only happen in the homeroom and less frequently
- Lunch and snacks are eaten in classrooms
- Students will have designated spaces and times for recesses to avoid congestions
- Start and end times may be staggered

Distance Learning

High Risk: The public health situation in Kobe, Hyogo and/or Japan significantly worsens due to an escalation of the pandemic. The CA Leadership and Board of Trustees determine that Face-to-Face lessons are not possible, or the authorities determine the need for school closure.

The CA campus will be closed and teaching and learning continues online following the already established CA Distance Learning model. Faculty and staff may be required to work from home and access to the campus may be limited to emergency or other pressing reasons and need to be pre-arranged through the school Leadership Team.

- Daily Distance Learning tasks are sent home through SeeSaw Learning Management Tool
- Students will participate learning through asynchronous and synchronous lesson as appropriate to the age and tasks designed
- Students may be provided with loaner laptops or iPads enabling the access to Distance Learning
- School will design tasks that are aligned with the CA educational philosophy and practice, IB PYP conditions for learning, and current research on teaching and learning online
- Student screen time is limited based on research and recommendations for different developmental stages of Elementary School students



Secondary School Safety Implications

Open Campus

Low Risk: The public health situation in Kobe, Hyogo, and Japan continues to improve and community spread is contained and controlled.

The campus will be open with many new protocols ensuring necessary physical distancing and rigorous hygiene practice. Secondary School will follow the normal 9-day schedule with regular start and ending times. Teaching and learning will be resumed as close to normal as possible and aligned with the CA philosophy and practice, and programs.

- Rigorous hygiene protocols are followed
- All students and adults on campus are wearing mask whenever possible and safe
- No parents on campus
- Classroom spaces are re-organized to allow physical distancing
- Student movement on campus may be limited
- Students will follow carefully designed measures for transitions, lunch and recesses to ensure physical distancing and high level of hygiene

Hybrid

Medium Risk: The public health situation in Japan continues to be at risk. Community spread in the Hyogo region means that additional and immediate physical distancing in school is required.

The campus is open with extended physical distancing measures. Secondary School will reduce the density of students in each classroom.

School leadership decisions or government policies regarding distancing and group sizes may guide limitations to the number of students on campus at any one time.

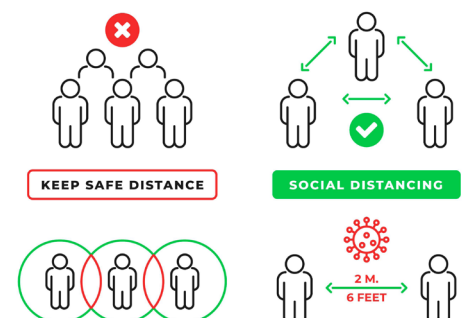
- Rigorous hygiene protocols are followed
- Student numbers in each classroom are reduced by about 50%
- Students will alternate between two days on-campus and two days of Distance Learning
- Direct student-to-student or teacher-to-student interactions are limited
- No parents are allowed on campus
- Student movement on campus is minimized and students will have designated spaces and times for recess and lunch to avoid congestions
- School will design tasks that are aligned with the CA educational philosophy and we will maintain our core practise of classroom inquiry
- The IB MYP and DP curriculum and assessment will be maintained using best practises in online learning

Distance Learning

High Risk: The public health situation in Kobe, Hyogo and/or Japan significantly worsens due to an escalation of the pandemic. The CA Leadership and Board of Trustees determine that Face-to-Face lessons are not possible, or the authorities determine the need for school closure.

The CA campus will be closed and teaching and learning continues online following the already established CA Distance Learning model. Faculty and staff may be required to work from home and access to the campus may be limited to emergency or other pressing reasons and need to be pre-arranged through the school Leadership Team.

- Daily Distance Learning tasks are sent home through online classroom tool
- Students will participate learning through asynchronous tasks posted in the morning and synchronous lessons, scheduled using the existing timetable
- School will design tasks that are aligned with the CA educational philosophy and we will maintain our core practise of classroom inquiry
- The IB MYP and DP curriculum and assessment will be maintained using best practises in online learning



Health and Safety

CA continues to develop procedures for the commencement of the 2020-21 school year. These will be shared in detail with the CA community in August.



Access to Campus:

Campus access will be allowed for students, staff and faculty. Parent access will be limited to those with ELAC children.



Cafeteria/Food Services:

Buffet lunch service will be suspended until further notice. Cezars Kitchen will provide o-bento services for those students interested.



Facility Cleaning:

Facility cleaning and disinfection will be increased, especially common areas, high touch surfaces, and high-traffic zones. Teachers and assistants will be responsible for disinfecting desks & tables after each class period throughout the date.



Group Gatherings:

We will limit large gatherings and interactions through a variety of measures such as by reducing student assemblies and grade level gatherings.



Hand Hygiene:

Hand washing and use of hand sanitizer will be enforced throughout the day. Additional sinks and hand sanitizer will be provided.



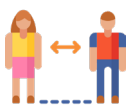
Health Screenings:

We expect all families to self-check family members before coming to school each day. If not feeling well, stay home. Temperature checks will also be in place before entering CA. A quarantine room near the Health Office has been created for those students exhibiting COVID-19-related health concerns.



Masks:

All students, teachers and staff will wear masks whenever possible and safe. Students will be required to supply their own masks throughout the day.



Physical Distancing:

Furniture layout, line-ups, and walking within the building will be configured to maintain physical distancing as much as possible.



Quarantine Requirements:

CA will require families or household members to follow Japanese government quarantine requirements.



Transportation:

Prior to riding CA busses, students will be required to share their temperature reading, apply hand sanitizer as they enter the bus and wear masks at all times. CA busses will be sanitized after each trip. Students taking public transportation are encouraged to wear a mask and follow recommended hygiene practices.



Water Fountains:

Students are required to refill personal water bottles from water fountains. Drinking directly from water fountains is prohibited.

Thank You

A special thank you to our students and parents for their flexibility and understanding. During these challenging times, we are heartened by what has always been our strength: a caring, supportive community. Together, we will continue to ensure our children are challenged, supported, and nurtured.



Thank you to the following schools for sharing their planning and inspiring our thinking:

American School in Japan
American Embassy School
Copenhagen International School
International School Basel